

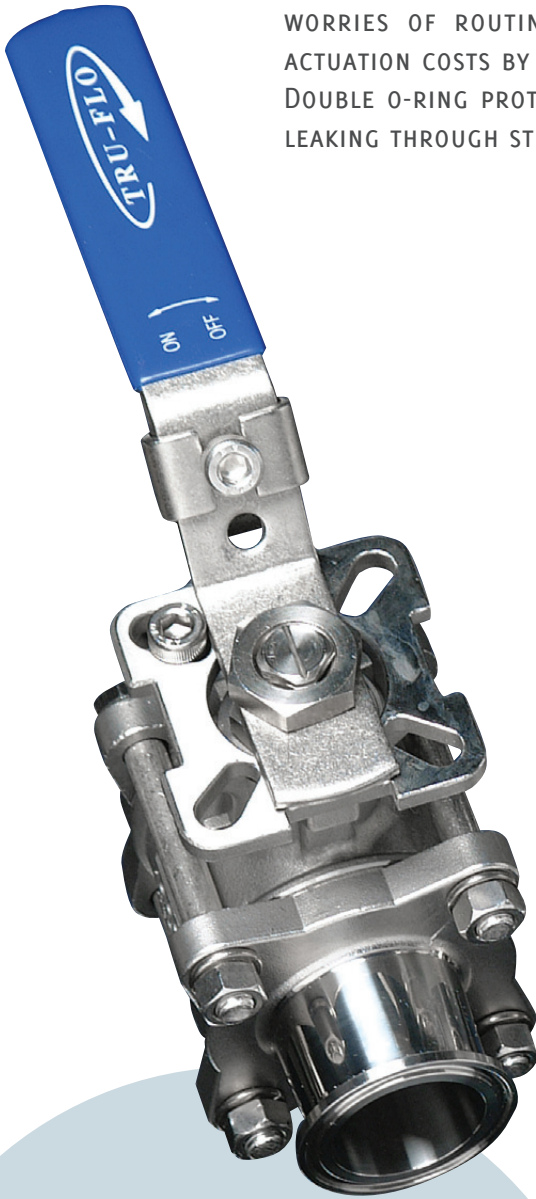
SANITARY DIRECT MOUNT BALL VALVES

THE NEXT GENERATION BALL VALVES ARE LIVE LOADED WITH SELF-ADJUSTING PACKING AND A DESIGN THAT IS SPECIFICALLY MANUFACTURED FOR HIGH CYCLE APPLICATIONS. **TRU-FLO** PRODUCTS REDUCE THE WORRIES OF ROUTINE MAINTENANCE EXPENSES WHILE LOWERING ACTUATION COSTS BY ELIMINATING CUSTOM BRACKETS AND COUPLERS. DOUBLE O-RING PROTECTION PROVIDES ADDITIONAL DEFENSE AGAINST LEAKING THROUGH STEM AND LOWER OPERATING TORQUE.

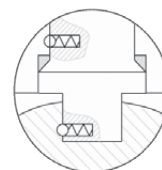


Features & Benefits

- » Designed for high cycle automated applications
- » Highly polished internals and end caps with 8-12 Ra finish
- » All materials comply with FDA, USDA, & 3A requirements
- » Investment cast body and end caps
- » ASTM 316 stainless steel
- » Standard with Tri-clamp® ends; *other end configurations available*
- » 100% tested and inspected prior to shipping
- » Full traceability of all components
- » SST x PTFE steam seats available for high temperature applications
- » Standard seats are TFM-1600
- » Cavity fillers are virgin PTFE



AVAILABLE IN STANDARD
OR CAVITY FILLED SEATS

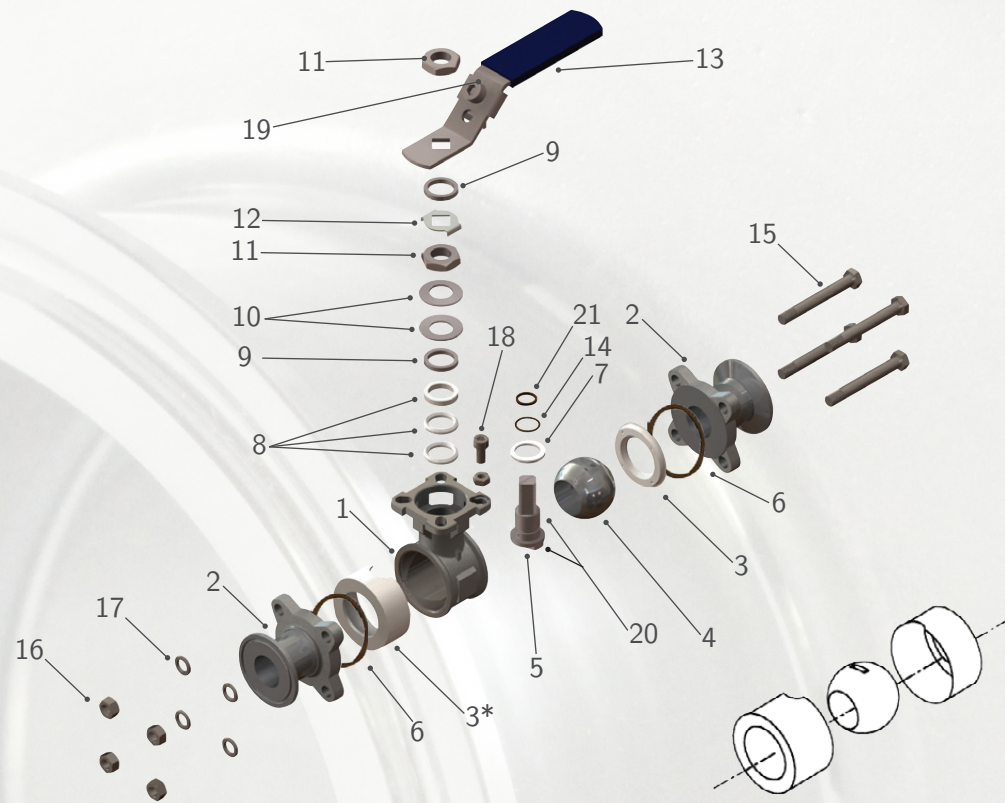


Pyramidal Stem &
Anti-Static Device
(Optional)

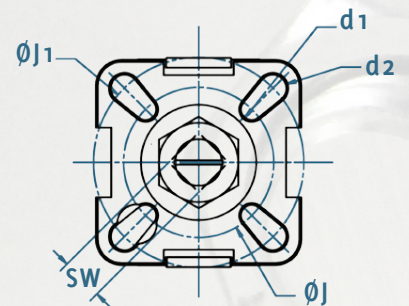
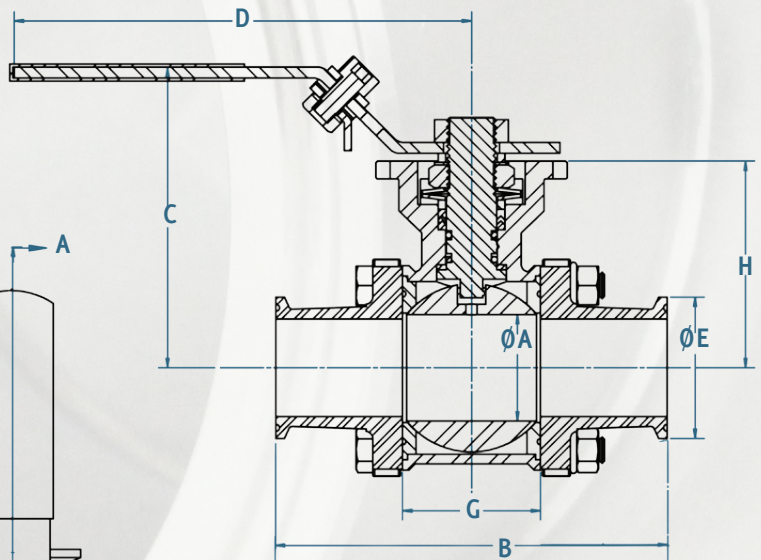


EA-33NF-SN

DATASHEET PROVIDED COURTESY OF ACCURATE VALVE - ILLINOIS, USA - WWW.ACCURATEVALVE.COM - PH: +1 (708) 588 - 1433

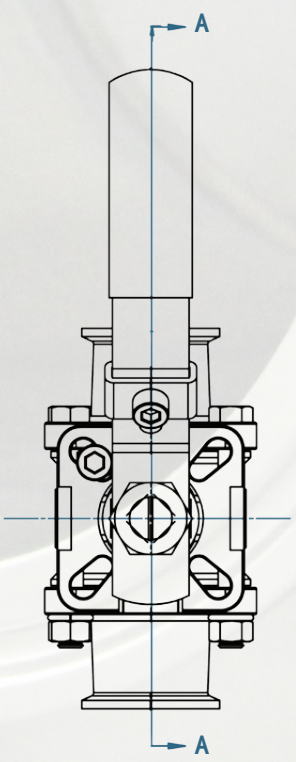


| Item | Part (Qty) | Material |
|------|------------------------------|----------|
| 1 | Body | CF8M/316 |
| 2 | End Caps (2) | CF8M/316 |
| 3* | Seats (2) | PTFE |
| 4 | Ball | SUS 316 |
| 5 | Stem | SUS 316 |
| 6 | Body Seal (2) | PTFE |
| 7 | Stem Gasket | PTFE |
| 8 | Stem Seals (3) | PTFE |
| 9 | Gland Ring (2) | SUS 301 |
| 10 | Belleville Spring Washer (2) | SUS 304 |
| 11 | Lever Nut | SUS 304 |
| 12 | Locking Tab | SUS 304 |
| 13 | Handle | SUS 304 |
| 14 | O ring | SUS 304 |
| 15 | Bolts (4) | SUS 304 |
| 16 | Bolts Nut (4) | SUS 304 |
| 17 | Washer (4) | SUS 304 |
| 18 | Stop Screw | PVC |
| 19 | Locking Device | SUS 304 |
| 20 | Static Device (2) | SUS 316 |
| 21 | O ring | VITON® |



*Option: Cavity Filled

| Standard Grit | Ra | | RMS | | Class |
|---------------|-------|---------|-------|---------|-------|
| | µin | µ | µin | µ | |
| 240g | 14-18 | .34-.46 | 15-20 | .38-.51 | B |
| 320g | 8-10 | .21-.25 | 9-11 | .23-.28 | A |



| Size | A | B | C | D | E | G | H | L | J | J1 | d1 | d2 | SW | ISO5211 |
|------|------|-------|------|-------|------|------|------|------|------|------|------|------|------|---------|
| ½" | 0.37 | 3.50 | 2.79 | 4.33 | 1.00 | 0.99 | 1.67 | 0.32 | 1.42 | 1.65 | 0.24 | 0.24 | 0.35 | F03/F04 |
| ¾" | 0.63 | 4.00 | 2.89 | 4.33 | 1.00 | 1.09 | 1.76 | 0.32 | 1.42 | 1.65 | 0.24 | 0.24 | 0.35 | F03/F04 |
| 1" | 0.87 | 4.50 | 3.31 | 5.32 | 1.98 | 1.30 | 2.13 | 0.39 | 1.65 | 1.97 | 0.24 | 0.28 | 0.43 | F04/F05 |
| 1½" | 1.37 | 5.50 | 4.31 | 6.50 | 1.98 | 1.94 | 2.89 | 0.58 | 1.97 | 2.76 | 0.28 | 0.35 | 0.55 | F05/F07 |
| 2" | 1.87 | 6.25 | 4.68 | 6.50 | 2.52 | 2.50 | 3.26 | 0.58 | 1.97 | 2.76 | 0.28 | 0.35 | 0.55 | F05/F07 |
| 2½" | 2.37 | 7.00 | 5.25 | 9.06 | 3.05 | 2.76 | 4.21 | 0.67 | 2.76 | 4.02 | 0.35 | 0.43 | 0.67 | F07/F10 |
| 3" | 2.88 | 9.00 | 6.30 | 11.81 | 3.58 | 4.02 | 4.62 | 0.67 | 2.76 | 4.02 | 0.35 | 0.43 | 0.67 | F07/F10 |
| 4" | 3.84 | 9.50 | 6.90 | 11.81 | 8.90 | 4.02 | 5.21 | 0.67 | 2.76 | 4.02 | 0.35 | 0.43 | 0.67 | F07/F10 |
| 6" | 5.78 | 15.50 | 8.51 | 19.68 | 6.57 | 7.42 | 8.50 | 1.06 | 4.02 | 4.92 | 0.47 | 0.55 | 1.06 | F10/F12 |